

# Specifications

## Concealed Floor-Standing High Static Pressure

- Silent operation.
- Sirocco fan driven by inverter motor.
- Compatible with Wi-Fi Kit controller.
- Long-life washable permanent filter.
- Auto Restart function.



Model		AM036MNFDEH/EU	AM056MNFDEH/EU	AM071MNFDEH/EU		
Power Supply	Φ, #, V, Hz	1Φ, 2, 220-240 V, 50 Hz	1Φ, 2, 220-240 V, 50 Hz	1Φ, 2, 220-240 V, 50 Hz		
Performance	Capacity (Nominal)	Cooling kW	3.6	5.6	7.1	
		Heating kW	4.0	6.3	8.0	
Power	Power input (Nominal)	Cooling kW	0.022	0.042	0.042	
		Heating kW	0.022	0.042	0.042	
	Current input (Nominal)	Cooling A	0.20	0.37	0.37	
		Heating A	0.20	0.37	0.37	
Fan	Motor	Type	-	Sirocco Fan	Sirocco Fan	
	Output x n	W	100 x 1	100 x 1	100 x 1	
	External Static Pressure	Min/Std/Max	mmAq	0.00/3.00/6.00	0.00/3.00/6.00	0.00/3.00/6.00
		Min/Std/Max	Pa	0.00/29.40/58.90	0.00/29.40/58.90	0.00/29.40/58.90
Piping Connections	Liquid Pipe	ϕ <sub>n</sub> , mm	6.35	6.35	9.52	
		ϕ <sub>n</sub> , inch	1/4	1/4	3/8	
	Gas Pipe	ϕ <sub>n</sub> , mm	12.70	12.70	15.88	
		ϕ <sub>n</sub> , inch	1/2	1/2	5/8	
Field Wiring	Drain Pipe	ϕ <sub>n</sub> , mm	ID 18 HOSE	ID 18 HOSE	ID 18 HOSE	
	Power Source Wire	mm <sup>2</sup>	1.5-2.5	1.5-2.5	1.5-2.5	
	Transmission Cable	mm <sup>2</sup>	0.75-1.50	0.75-1.50	0.75-1.50	
Refrigerant	Type	-	R410A	R410A	R410A	
	GWP	-	2.088	2.088	2.088	
	Control Method	-	EEV INCLUDED	EEV INCLUDED	EEV INCLUDED	
Sound <sup>1</sup>	Sound Pressure	(H/M/L)	37/32/27	40/36/32	40/36/32	
	Sound Power	dB(A)	53.0	59.0	59.0	
	Net Weight	kg	22.0	27.0	27.0	
Dimensions	Net Dimensions (W x H x D)	mm	945 x 600 x 220	1,225 x 600 x 220	1,225 x 600 x 220	
	Additional Accessories	Air Filter	-	Long-life Filter	Long-life Filter	

### Accessories

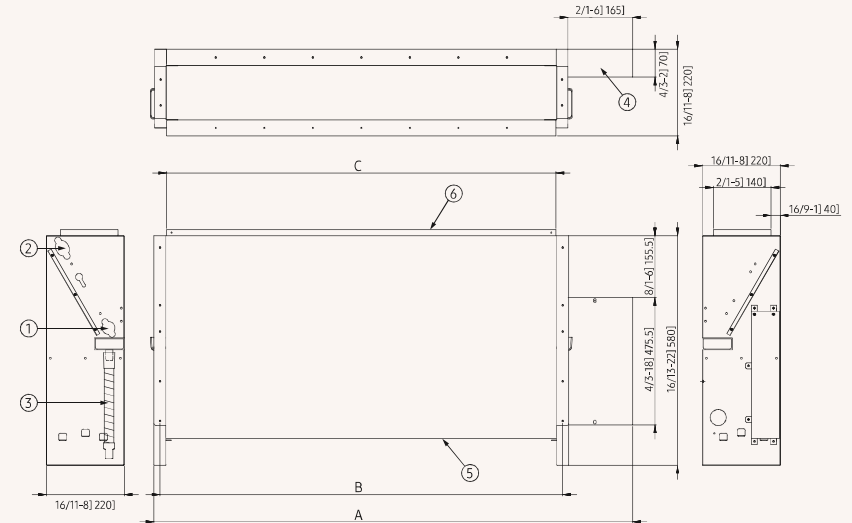


Touch Controller	Wired Remote Controller	Wired Remote Controller	Wi-Fi Kit	External Thermostat
MWR-SH11N	MWR-WE13N	MWR-WG00*N	MIM-H04EN	MRW-TA

# Dimensional drawings

## Concealed Floor-Standing High Static Pressure

AM036/056/071MNFDEH/\*\*



Model	A	B	C
AM036MNFDEH/EU	945	730	700
AM056/071MNFDEH/EU	1,225	1,010	980

NO	Name	Description		
		<b>3.6 kW</b>	<b>5.6 kW</b>	<b>7.1 kW</b>
1	Liquid pipe connection	ϕ6.35 Flare	ϕ6.35 Flare	ϕ9.52 Flare
2	Gas pipe connection	ϕ12.70 Flare	ϕ12.70 Flare	ϕ15.88 Flare
3	Drain pipe connection	ID18 Hose	ID18 Hose	ID18 Hose
4	Power supply/communication wiring conduits			
5	Air inlet grille			
6	Air outlet louvre			