

Specifications

Big Duct

- Two-position field adjustable air return, on the bottom or at the rear of the unit.
- Equipped with two Sirocco fans direct driven by a single motor.
- Auto Restart function.
- Optional condensate drain pump.
- Long-life HD 40 permanent filter is included.



Model			AM180JNHFKH/EU	AM224JNHFKH/EU	
Power Supply		Φ, #, V, Hz	1Φ, 2, 220-240 V, 50 Hz	1Φ, 2, 220-240 V, 50 Hz	
Performance	Capacity (Nominal)	Cooling	kW	18	22.4
		Heating	kW	20	25
Power	Power input (Nominal)	Cooling	W	340	530
		Heating	W	340	530
	Current input (Nominal)	Cooling	A	1.90	2.90
		Heating	A	1.90	2.90
Fan	Motor	Type	-	Sirocco Fan	Sirocco Fan
	Airflow Rate	Output x n	W	630 x 1	630 x 1
		H/M/L (UL)	m ³ /min	58.00/50.00/43.00	72.00/61.00/50.00
	External Static Pressure		l/s	966.67/833.33/716.67	1,200.00/1,016.67/833.33
Min/Std/Max		mmAq	5.00/7.34/20.00	5.00/7.34/20.00	
Piping Connections	Liquid Pipe		Pa	49.00/71.93/196.00	49.00/71.93/196.00
		ø, mm		9.52	9.52
	ø, inch		3/8	3/8	
	Gas Pipe	ø, mm		19.05	19.05
		ø, inch		3/4	3/4
	Drain Pipe	ø, mm		VP25 (OD 25, ID 20)	VP25 (OD 25, ID 20)
Field Wiring	Power Source Wire	mm ²	-	-	
	Transmission Cable	mm ²	0.75-1.50	0.75-1.50	
Refrigerant	Type	-	R410A	R410A	
	Control Method	-	EEV(O)	EEV(O)	
Sound ²	Sound Pressure	(H/M/L)	dB(A)	43/39/35	44/40/36
Dimensions	Net Weight	kg	82.5	82.5	
	Net Dimensions (W x H x D)	mm	1,350 x 450 x 910	1,350 x 450 x 910	
Additional Accessories	Drain Pump	Internal	-	MDP-G075SP	MDP-G075SP
		External	-	MDP-G075SQ	MDP-G075SQ

Accessories

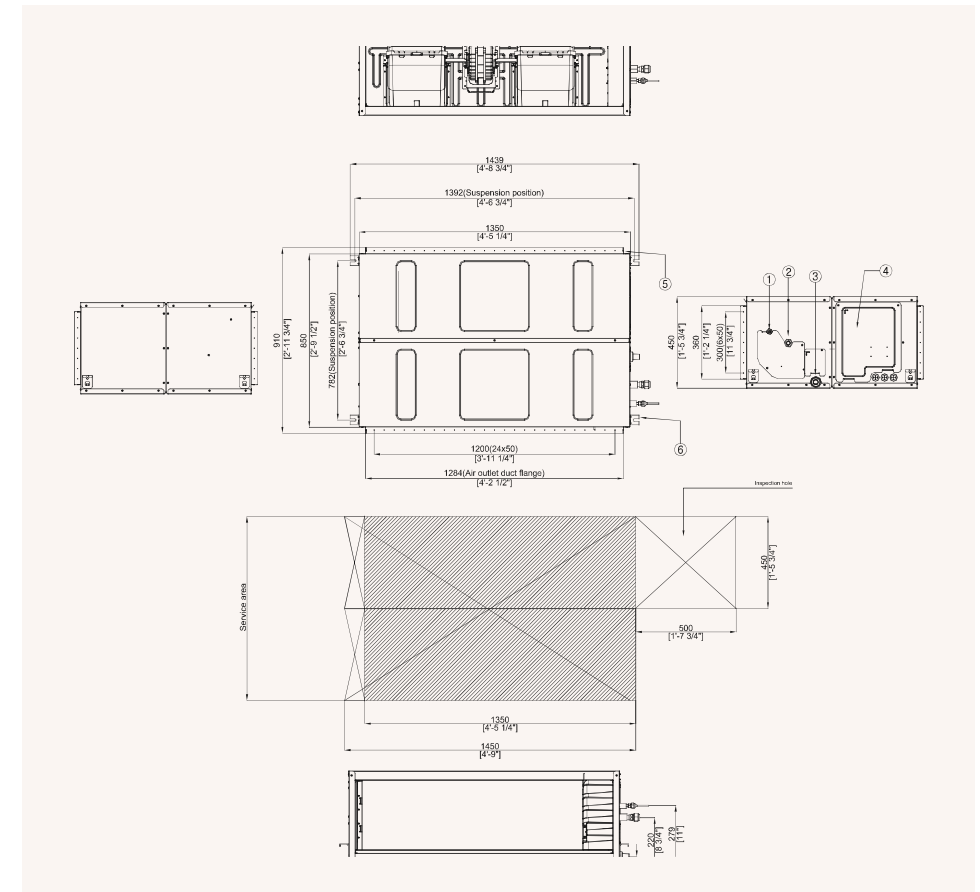


External Drain Pump	Built-in Drain Pump	Wireless Remote Controller	Touch Controller	Wired Remote Controller	Wired Remote Controller	Wi-Fi Kit	Wireless Receiver Kit	External Thermostat
MDP-G075SP	MDP-G075SQ	AR-EH03E (to be matched with MRK-A10N)	MWR-SH11N	MWR-WE13N	MWR-WG00*N	MIM-H04EN	MRK-A10N (to be matched with AR-EH03E)	MRW-TA

Dimensional drawings

Big Duct

AM180JNHFKH/EU, AM224JNHFKH/EU



NO	Name
1	Liquid pipe connection
2	Gas pipe connection
3	Drain pipe connection
4	Power wiring conduits
5	Air discharge flange
6	Hook